

# CHESHAM BOIS MANOR CARE HOME

CHESHAM, BUCKINGHAMSHIRE



**Chesham Bois Manor** is set within eight acres of beautiful landscaped grounds, and is ideally situated close to Chesham town centre. The converted historic flint stoned old Manor House dates back to William the Conqueror's time and has been sympathetically extended whilst retaining many of its original features.



See the quality B&M Care engagement and wellbeing lifestyle for yourself...



T: 01494 783194 | E: [chesham@bmcare.co.uk](mailto:chesham@bmcare.co.uk) | W: [www.bmcare.co.uk](http://www.bmcare.co.uk)

Chesham Bois Manor Care Home, Amersham Road, Chesham, Buckinghamshire, HP5 1NE



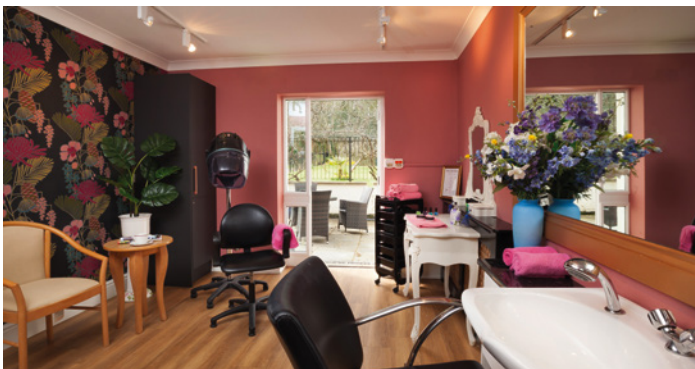


### The Care We Offer:

- Fully inclusive, 24hr person centred care by experienced staff
- Long term residential care for older people
- Long term specialist dementia care in a safe, engaging environment designed using our Rose Model of Dementia Care
- Short stay, respite and holiday breaks (subject to availability).

### Facilities:

- 39 en-suite rooms
- TV points in all rooms
- Telephone, internet & SKY TV available by arrangement
- Rooms can be personalised
- Call bell system for assistance at any time
- Lift and stair lift
- Assisted bath and shower rooms
- Choice of resident and visitor lounges and conservatories
- Period Library Room
- Grand Dining Room
- Fully inclusive dining in a choice of dining areas
- Fully inclusive in-house laundry
- Hair and Treatment Salon
- Activities Suite
- Memory café
- Easy access to private landscaped gardens, patio areas and garden cottage
- GP, district nurse, optician, chiropodist, dentist by appointment
- Transport for trips out.



### Dining:

Our skilled chefs regularly create new, varied menus featuring delicious, nutritionally balanced meals. Dining is inclusive to all dietary needs or preferences, and a range of choices is provided. Residents can decide to enjoy their meals in our comfortable dining rooms, or in the privacy of their own room. We ensure refreshments and snacks are always available, 24/7.

### Lifestyle and Activities:

We create a safe, stimulating environment where the highest standards of care are provided. Our aim is always to promote, encourage and maintain a resident's independence and quality of life. We facilitate an active, social lifestyle - with community, friends and families always welcome. Our dedicated Engagement Leads organise varied social calendars for events and entertainment, in groups and individually. Every resident experiences meaningful occupation, designed around their personal wishes and preferences.



### The Staff:

- Select team of experienced, professional staff
- Our staff training programmes are industry-envied, particularly our expert dementia care training
- Appropriate ratios of staff both day and night
- Emphasis on individually planned care
- Staff are always person centred, advocating for independence and providing 24/7 support.

### How To Find Us:

- For satnav use postcode HP5 1NE
- From A41 exit at A416 towards Chesham. Continue on A416 through Chesham, following signs for Amersham. The home is located on the right at the bottom of Amersham Road before you go up the hill.

### To Arrange a Viewing or For Further Information:

We have an open door policy and B&M Care invites you to visit the home at any time. If you would like to arrange a viewing at a specific time or require further information please contact us using the details below.

See the quality B&M Care engagement and wellbeing lifestyle for yourself...



T: 01494 783194 | E: [chesham@bmcare.co.uk](mailto:chesham@bmcare.co.uk) | W: [www.bmcare.co.uk](http://www.bmcare.co.uk)

Chesham Bois Manor Care Home, Amersham Road, Chesham, Buckinghamshire, HP5 1NE